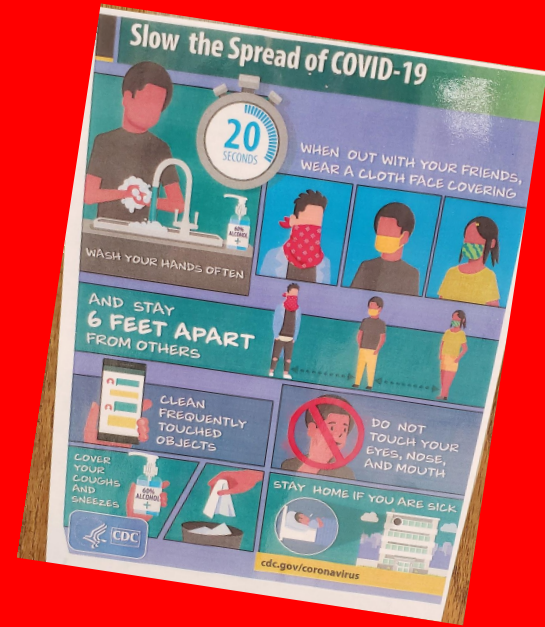


WELCOME MOUNT HOREB MIDDLE SCHOOL!

In-person instruction will become an option soon

THINGS WILL LOOK
DIFFERENTLY WHETHER
STUDENTS ARE
IN-PERSON OR VIRTUAL



School will be much different than a typical in-person school day

- Schedule: 8:05am - 3:25pm
 - A-K (Monday & Tuesday)
 - L-Z (Thursday & Friday)
 - All students will still participate in classes 4 days/week.
 - *Some will be in-person, some will be virtual*
 - Viking Hour will meet 4 days/week
 - Four class periods will meet each day
 - Larger portions of the day will be with in homeroom

Some options during homeroom times

- Meet virtually with teachers
- Reteaching/redo assessments
- Virtual music lessons
- Socialization opportunities
- Reading/Math Intervention
- Extensions
- Read silently
- Complete assignments or asynchronous work
- Mask breaks
- Recess
- Hygiene (restroom and handwashing)
- WIN time

An example of what a students day may look like

In-person days:

- Report to Homeroom - Viking Hour and Homeroom time
- Attend 2 classes
- Lunch
- Homeroom
- Attend 2 classes
- Dismissal

Virtual or days opposite in-person:

- Log in to Viking Hour *(may also be invited or requesting a small group prior to VH)*
- Attend 2 classes Virtually
- Lunch break
 - Possible small group based on invite or request
- Attend 2 classes Virtually

School will be much different than a typical in-person school day

- Instruction

- Instruction will look very much like it looks now, even if you are physically in the building.
- Chromebooks will be used daily
- Google Classroom

- Safety

- **Masks** are essential and required at all times
- **6 feet** between students and staff at all times
- Very **limited mixing** of students
- Alternating lunches and passing times
- Lockers? We may not even need them.



WE KNOW SOME OF
YOU ARE NEW TO THE
MIDDLE SCHOOL -
DON'T BE WORRIED!!

PLEASE DO NOT HESITATE TO REACH OUT IF
YOU HAVE QUESTIONS

christiansenpaul@mhasd.k12.wi.us

Important Dates

- January 10: Survey closes at 1:00 PM
- January 18 & 25: No scheduled classes
- January 20 & 27: Regular class schedule
 - Details shared on December 11th. I will share again with families.
- February 3 and 10: No Viking Hour
- February 10: Finalized schedule to families
- February 10-12: No scheduled classes
- February 15: Target date to welcome our students into Mount Horeb Middle School